


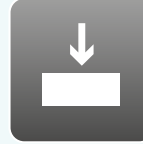

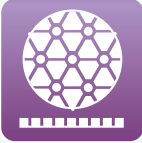


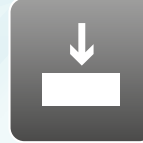





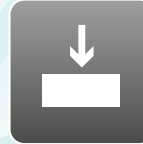

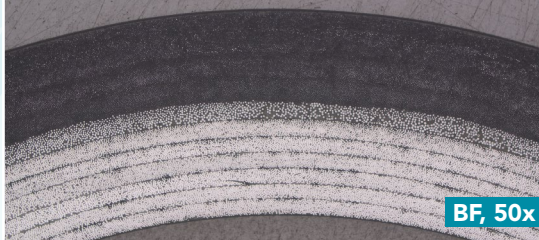



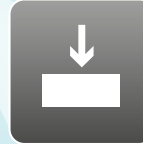

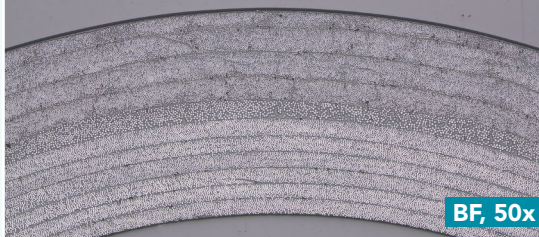


# Aka-Brief #9 Composites à base de fibres de carbonnes

1						
	Rhaco Grit P500*	Water	300 rpm	20 N	Until plane	BF, 50x
2						
	Largan 9	DiaUltra 9 µm	150 rpm	30 N	4:00 min	BF, 50x
3						
	Daran	DiaUltra 3 µm	150 rpm	20 N	2:30 min	BF, 50x
4						
	Chemal**	Alumina 50 nm Neutral	150 rpm	15 N	2:00 - 3:00 min	BF, 50x

Les temps sont indiqués pour un système de préparations de 300 mm et les forces pour un échantillon individuel de 40 mm de diamètre.

Sur un système de 250 mm, les temps doivent être augmentés de 30%, sur un système de 200 mm sur 100%.

La force doit être augmentée pour les échantillons plus grands et diminués pour les échantillons plus petits.

La vitesse de rotation de la tête (porte échantillon ou plaque porte - échantillon) utilisée est de 150 tr/min.

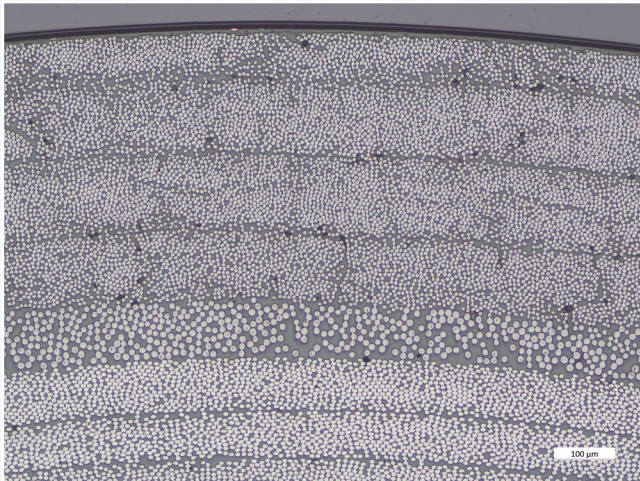
Les temps et la force peuvent varier en fonction de l'équipement.

\*Avant le polissage aux oxydes, le tissu de polissage doit être mouillé avec de l'eau jusqu'à le support touche le tissu de polissage.

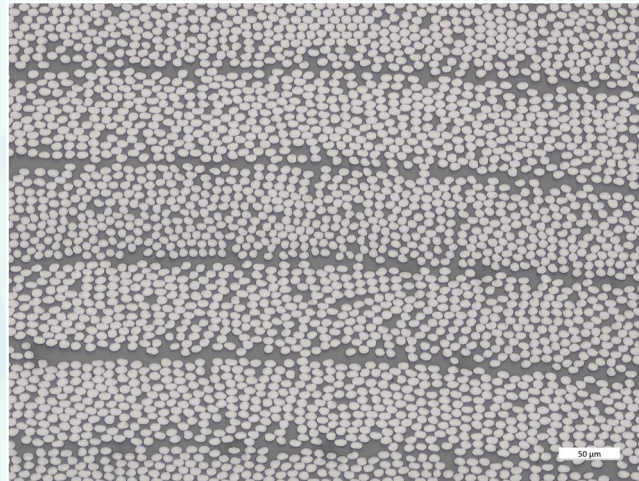
\*\*Le tissu de polissage doit être rincé à l'eau pendant 10 secondes de l'étape de polissage à l'oxyde, afin de nettoyer à la fois le ou les échantillons et le tissu de polissage.

# SOMECO

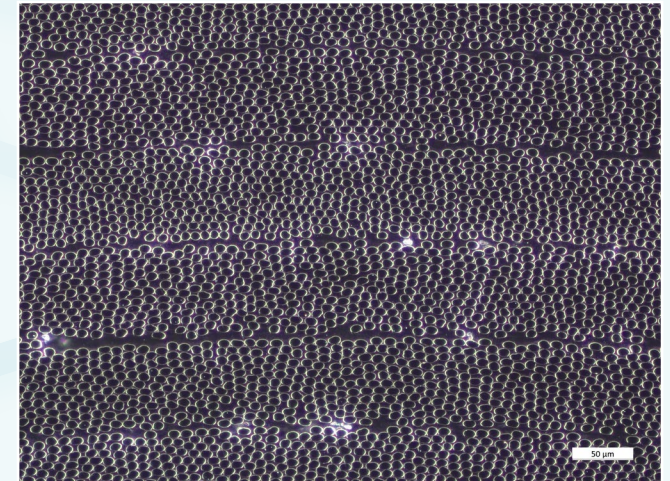
## RÉSULTAT FINAL



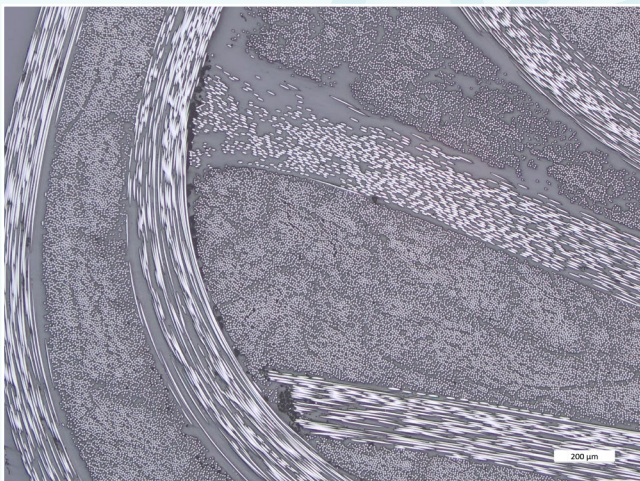
Sample 1, BF, 100x



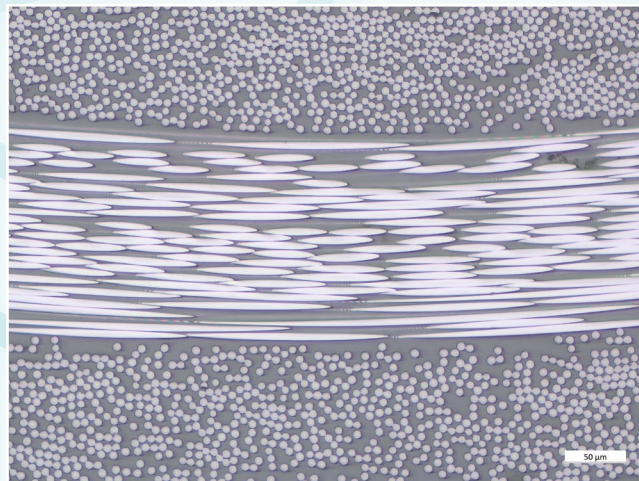
Sample 1, BF, 200x



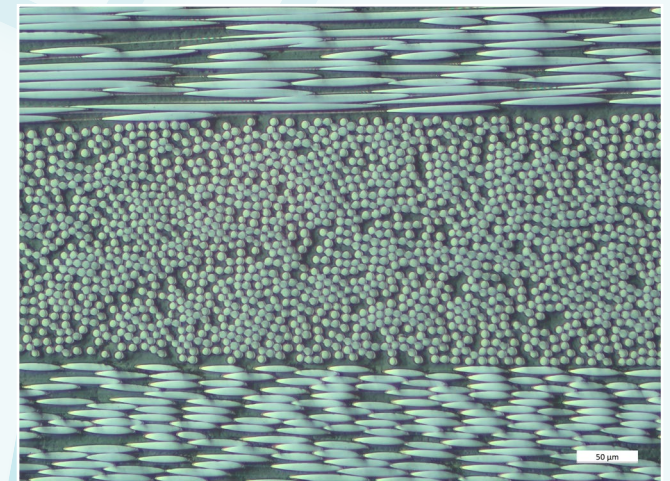
Sample 1, DF, 200x



Sample 2, BF, 50x



Sample 2, BF, 200x



Sample 2, DIC, 200x